



NEWSLETTER

The "Greater Kyalami Conservancy"

June 2014



DEVELOPMENT UPDATE

Reminder - Sewage line

Notice of intent to appeal due 6 June.
For details and appeal forms please
mail chair@gekco.co.za

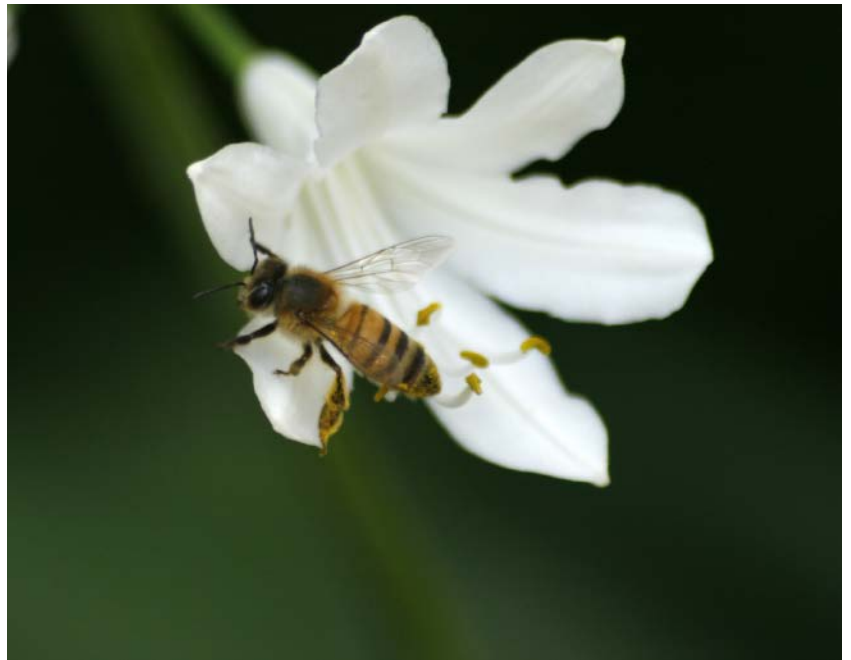


NUMBERS TO KEEP HANDY

Green Scorpions: 011 240-2500
Blue Scorpions: 0800 200 200
(wetlands / water pollution issues)
Environmental Crime Line: 0800 205 005
FreeMe Wildlife Rehab Centre: 011 807-6993
(After hours / emergency: 083 558-5658)
Snake Safe Removal: Mike Perry 083 448-8854

Biodiversity Project Update

A big thank you to all of the property owners and residents who have cooperated with GEKCO on the research being done in the area. Camera traps have been set up along the major wetlands to study wildlife movement. One of the more exciting finds was a porcupine making its way through Sun Valley. We will be posting the photos on the GEKCO Biodiversity Facebook page: <https://www.facebook.com/GEKCOwildlifecorridorproject>



Meeting with EWT and Specialists

GEKCO had a meeting with the Endangered Wildlife trust and has had offers of support from environmental specialists to look at wetland rehabilitation and doing a grass owl survey of the area. We are also approaching the City of Joburg to find out more about their intention to do biodiversity verification and flood line delineation in the area as was announced in the IDP feedback session last month.

GEKCO membership

When will the scales tip in favour of sustainability, community and a healthy environment? We believe we have the opportunity and ability to make this happen now. Please stand up and say no to this destruction, join GEKCO and others who are prepared to say enough is enough. It is our community, our future, and our responsibility to do something about it.

<http://gekco.co.za/gekco-membership/>

UPDATE ON LOCAL ISSUES AND EVENTS

K56 Public Meeting held on 27 May - Bokamoso consultants, WSP engineers and a representative from the Gauteng Department of Roads and Transport were present to present on the current status of the study. Specialist studies are being compiled including wetland reports with input from a soil scientist. Four alternatives were presented with the most direct route through the wetlands preferred from a road design perspective, however the wetlands and a rocky outcrop pose complications. The second preferred alternative is shown in the magenta colour as a route further north. However, it was pointed out that this also impacts on wetlands and various property owners. The consultants are awaiting completion of specialist reports to make a recommendation.

The community raised concern as to the motivation behind the road, whether the road meets Provincial objectives or the needs of developers who have entered into an agreement with Province to provide the road. It was suggested that the community work closely with Gauteng Dept of Agriculture and Rural Development (GDARD) to formally protect the area as it is unique and valuable from an equestrian and environmental standpoint.

You may download the presentation and maps from the meeting here and maps here:
<http://gekco.co.za/developments/K56>

We have included a map of a proposed network of roads through the GEKCO conservancy prepared for Century Properties. Please note this map is not commissioned by JRA, but indicates the intention of developers in the area.

Information Needed from Stable Yards

The K56 consultants are doing an impact study on the Kyalami area looking at localised movement and affects. However, the loss of the equestrian industry in the area would not only affect local property owners.

We have compiled a few simple questions below to show that this is not just a 'Kyalami' problem, but will impact people from other areas as well. Please could all liveryes and riding schools assist by answering these 5 questions and sending to kyalamiequestrianinfo@gmail.com by 13 June. Please include the name and address of the yard.

1. Training (disciplines) / therapies / products offered
2. Number of riders / clients
3. Number or percentage of riders local (Kyalami area - can be an approximation)
4. Number or percentage of riders from other suburbs (please also list suburbs / areas)
5. Average frequency that riders visit stables per week



RESOURCES Added to GEKCO Website

GEKCO has added a section to the website with important contact numbers, environmental legislation and city by-laws. It assists with contact numbers and what to do if you come across illegal dumping, illegal signage, water pollution, noise complaints, fireworks and illegal construction activity:

<http://gekco.co.za/resources/>

Schools in GEKCO

Environmental groups at Summit College and the American School have expressed an interest in the conservancy and assisting through school projects. Recycling and identification of wildlife as well as photo competitions were suggested. We welcome their participation and look forward to the students' input. If any school groups would like to find out more about the conservancy and how to get involved please contact chair@gekco.co.za